



missive

COUTURE ORDER GUIDE

2014

www.MISSIVEPRESS.com

COUTURE—LIKE YOU.

Newly engaged? Expecting a little one?
Time to refresh your stationery wardrobe?
If you want a design as unique as you are,
then you've come to the right place.

Missive specializes in couture stationery
and announcements, and even small
business identity design. We love making
your vision come to life in letterpress!

GETTING STARTED

Contact Missive with your couture order inquiry. Please include as much detail as possible about your vision for your custom project. We welcome inspiration boards, thoughts on colors, motifs or themes to incorporate, or wording you would like to use.

For a letterpress printing estimate, we will need to know the quantity, type of pieces and sizes for each, number of ink colors desired and any special touches such as die cutting or envelope lining.

YOUR ESTIMATE

After we have reviewed your inquiry, we will put together a proposal and estimate for your project. The estimate will include custom design fees based on the complexity of the project as well as letterpress printing and finishing costs.

TIMING

Please contact us as early as possible to allow ample time for your couture order. The design process can take anywhere from one to four months depending on the complexity of the design and the number of pieces. The production and letterpress printing process can take from three to six weeks.

DESIGN

The design phase of your couture order will begin once we receive your 50% non-refundable deposit and signed contract.

PROOFING

All of our proofing is done digitally in PDF format. Your initial proof will include 2-3 design directions to choose from. We include 2 additional rounds of revisions during the design phase. Additional proofs beyond the included 2 rounds of revisions are \$50 each and will be added to your balance due.

Please proofread—*very carefully*—at every stage of the design process! Send any necessary edits or corrections to us via email.

CUSTOM OPTIONS

We offer a variety of custom options to make your project as unique as you are.

PAPER & ENVELOPES

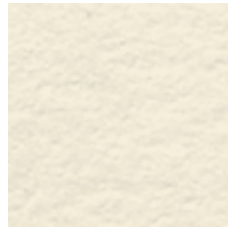
Our standard house letterpress paper is 110lb 100% cotton cover, a luxurious slightly textured stock available in 3 shades of white that has a full line of coordinating envelopes. Double-thick 220lb letterpress paper as well as a range of other papers and colored envelopes are available by special order.



BRIGHT WHITE



SOFT WHITE



ECRU WHITE

INK COLORS

Our ink color palette features 20 striking shades for your couture order. Specific Pantone colors can be special ordered for a fee.



CRIMSON



MAGENTA



BLUSH



MANDARIN



MIMOSA



PISTACHIO



CLOVER



EMERALD



TEAL



SEA FOAM



SKY



COBALT



NAVY



LAVENDER



VIOLET



ESPRESSO



CHARCOAL



BLACK



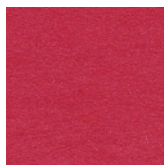
MATTE SILVER



MATTE GOLD

ENVELOPE LINER COLORS

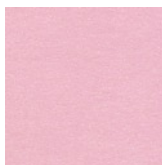
Our unique sparkle paper liners will add a pop of unexpected color to your envelopes.



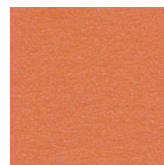
JUPITER



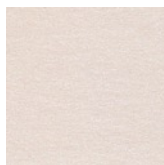
AZALEA



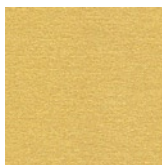
ROSE



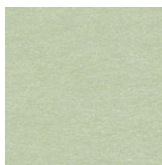
FLAME



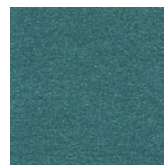
CORAL



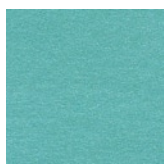
GOLD



SAGE



EMERALD



LAGOON



AQUAMARINE



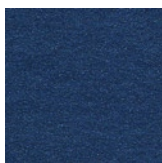
BLUEBELL



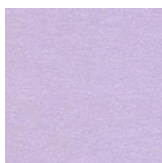
VISTA



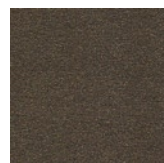
SAPPHIRE



LAPIS



KUNZITE



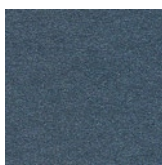
BRONZE



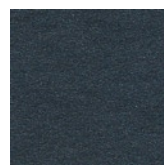
DK GOLD



SILVER



ANTHRACITE



ONYX

FONTS

Deco? Calligraphy? Or strictly sans serif? You'll surely find a font you love in our vast library of typefaces, or allow us to suggest fonts that fits your personal style. If there is a certain font you are looking for, we can purchase it specifically for your project and add it to your custom design and letterpress estimate.

FINISHING TOUCHES

We offer a variety of finishes to make your couture stationery extraordinary. Our finishing options include die cutting of unique shapes as well as envelope lining.

LETTERPRESS

Once the design phase is complete and you have signed off on your final proof and submitted payment for the balance of your order, we'll begin the process for letterpress printing the final design. Any additional edits or corrections after final proof sign-off will incur reprinting charges and are the sole responsibility of the client.

As soon as all work is complete, your couture letterpress order will be carefully packaged and shipped to you.

THE FINE PRINT

CANCELLATION POLICY

Like all custom products, couture letterpress items are designed specifically for you, and are therefore non-refundable in the event of an order cancellation.

ABOUT LETTERPRESS

Please note that all of our letterpress printing is done on antique presses dating from 1912. There may be subtle variations in ink intensity and/or registration, which are inherent to the process, and lend charm and authenticity to each printed piece.